



YOUR **TRAINING** GUIDE



Zurich - Location Kloten



Lufthansa
Aviation Training

Home of Training Competence

KEY MAP



Assembly Point



Bus Station



Coffee Break Room



Defibrillator



Eye shower



Fire extinguisher



First aid



Lift



Restroom Women, Men



Tram Station



Full Flight Simulator



Lufthansa Aviation Training

TABLE OF CONTENTS

Location

Lufthansa Aviation Training Center 4

Directions

Directions by Aircraft, Car, Public Transport, Foot 5

Access

Access to the Building and Training Devices 6

Training Facilities

Overview Building 7

Overview Simulators 8

Floor Plans

Building E / Ground Floor 9

Building E / First Floor 10

Building G / Ground Floor 11

Building G / First Floor 12

Building G / Second Floor 13

Services

Services of Lufthansa Aviation Training 14

Food and Beverages 15

Parking 16

Customer Satisfaction Management 17



LOCATION / LUFTHANSA AVIATION TRAINING CENTER

[More Information](#)
Training Facilities p.7

The Lufthansa Aviation Training Center Zurich, Location Kloten, is located next to Zurich Airport.

DIRECTIONS / DIRECTIONS BY AIRCRAFT, CAR, PUBLIC TRANSPORT, FOOT

Aircraft

You can take a taxi from the terminal to the Training Center at Balz-Zimmermannstrasse 38, Kloten. Alternatively, you can take the tram (line 10 or 12) from the airport's bus/tram terminal to "Balsberg" (1 stop). From there, it is a three-minute walk to the Training Center.

Car

Lufthansa Aviation Training is located to the A1 motorway towards Berne/Basel. The closest exits are Zürich Flughafen, Werft or Glattbrugg. Please note that there is no visitor parking available. Only four parking spaces are reserved for customers working on site as instructors. Please park at the airport and walk, take the tram, or use the bus to reach the Training Center.

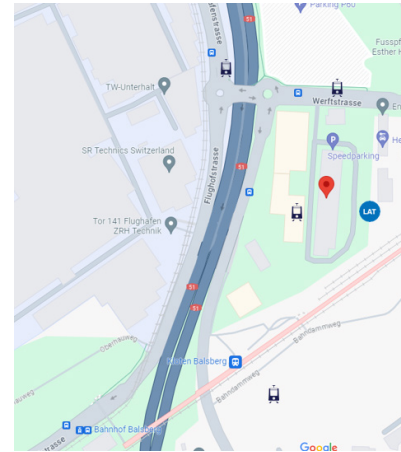
Public Transport

The training center is just around the corner from Zurich Airport and is super easy to reach by public transport.

- **Bus Stops:** Werft A, Werft B, Werft C (close to the airport and training center). There are many bus connections serving these stops. Please check the latest schedules online or at the bus station for accurate times.
- **Tram Stop:** Bahnhof Balsberg (Lines 10 & 12).
- **Train Stations:** Kloten Balsberg (S-Bahn S7) or Zurich Airport. From there, a short walk or quick bus/tram ride.

On foot

Depending on your starting point at the airport, you can also reach the training center in just approx. 10 minutes on foot.



Tip:

The easiest way to plan your trip is to check the online timetables for the best connection and exact travel times.

Timetables:
for buses and trams: www.zvv.ch
for trains: www.sbb.ch

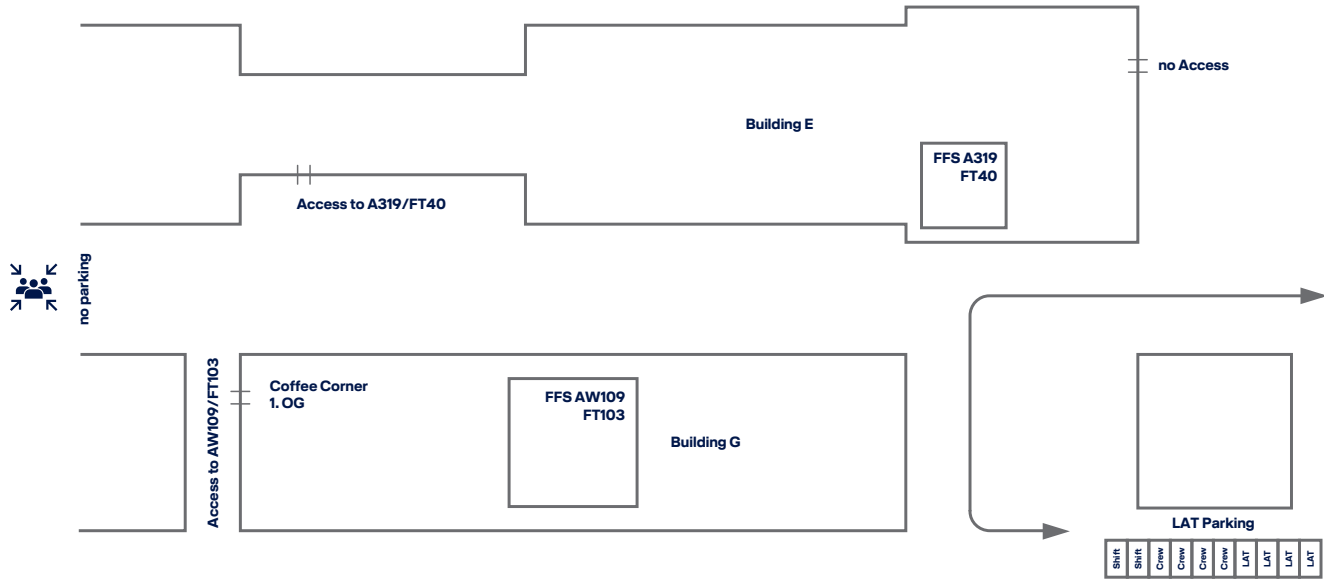
ACCESS / ACCESS TO THE BUILDING AND TRAINING DEVICES

Building access

Access to the building is granted with an entitled company or personal visitor badge. There are no QR code readers at the Klotten site, and therefore no check in is required for the simulator area as it is at the other locations.

Please visibly carry your company or visitor badge on you at all times inside the building.

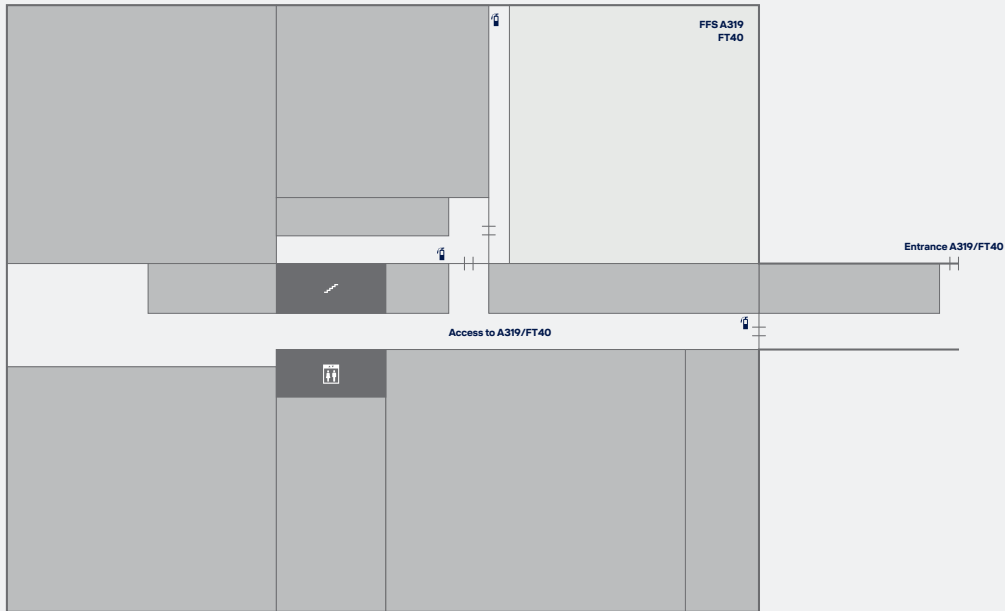
TRAINING FACILITIES / OVERVIEW BUILDING



TRAINING FACILITIES / OVERVIEW SIMULATORS

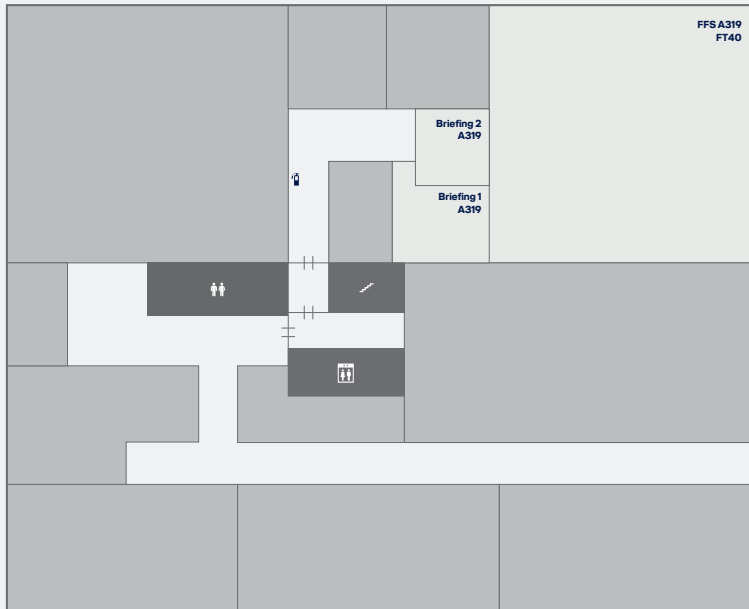
Full-Flight Simulators Airbus	Floor
Airbus 319 (FT40)	Building E, Ground Floor p.12

Full-Flight Simulators Rega	Floor
AW109 (FT103)	Building G, First Floor p.12



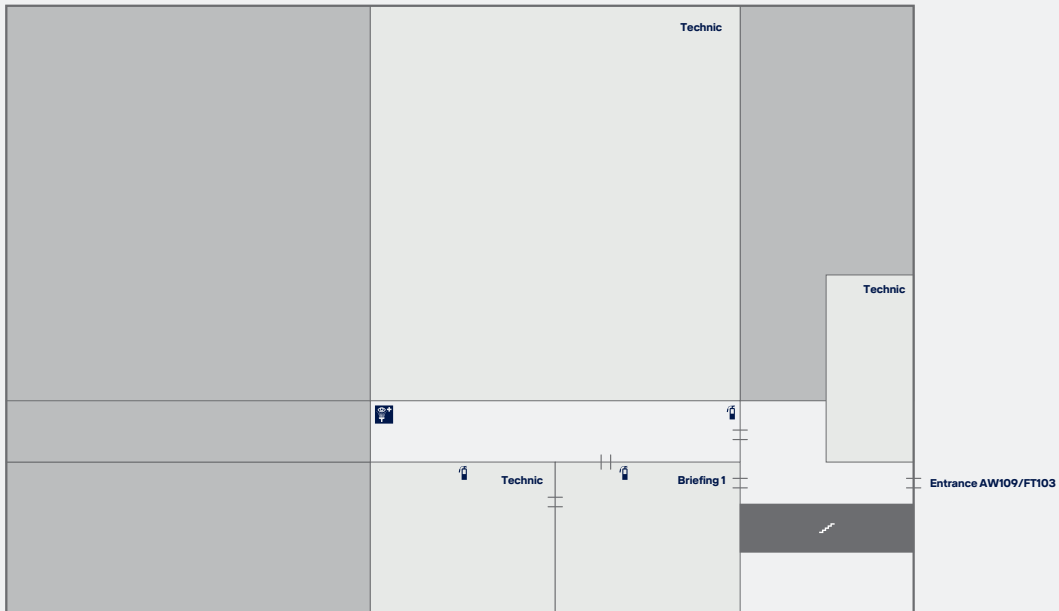
FLOOR PLANS / BUILDING E - GROUND FLOOR

The entrance and access to the A319 (FT40) full-flight simulator are on the ground floor of Building E.



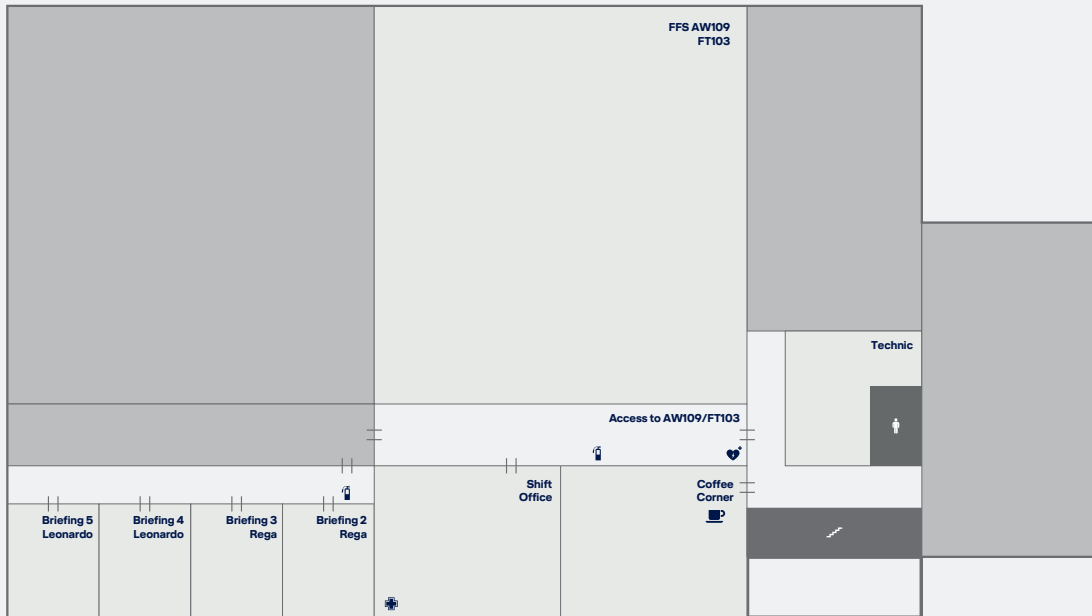
FLOOR PLANS / BUILDING E - FIRST FLOOR

The A319 (FT40) briefing rooms are located on the first floor of Building E.



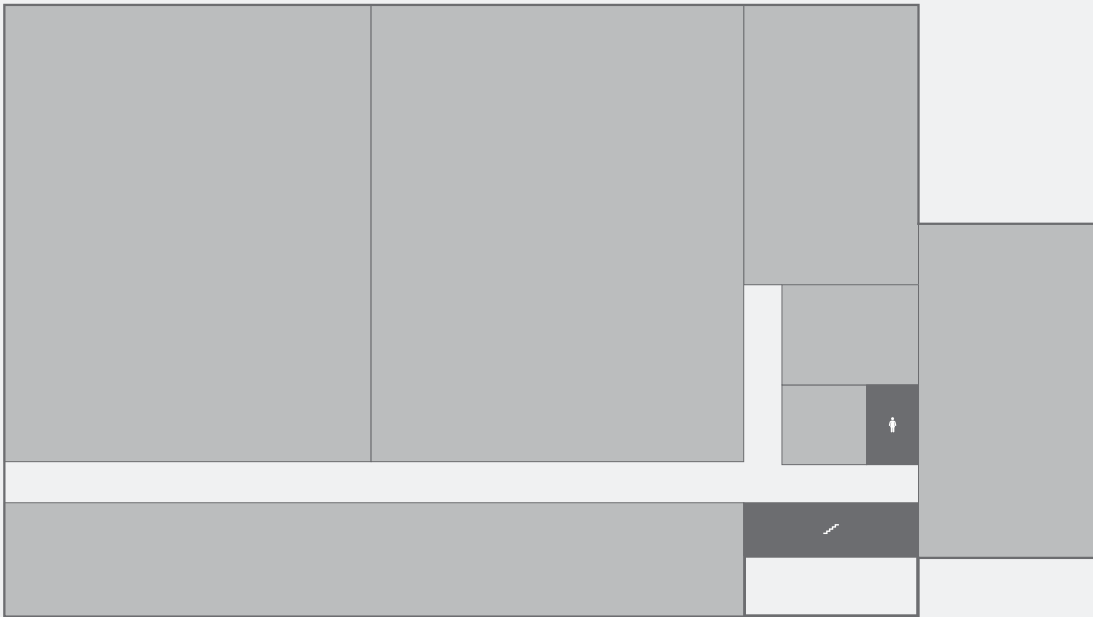
FLOOR PLANS / BUILDING G - GROUND FLOOR

The entrance to the AW109 (FT103) full-flight simulator is on the ground floor of Building G. Please note that access to the simulator is on the first floor.



FLOOR PLANS / BUILDING G - FIRST FLOOR

Access to the AW109 (FT103) full-flight simulator, the briefing rooms, and the coffee corner is located on the first floor of Building G.



FLOOR PLANS / BUILDING G - SECOND FLOOR

The women's restroom is on the second floor of Building G.

SERVICES / SERVICES OF LUFTHANSA AVIATION TRAINING

Group Services of Lufthansa Aviation Training

24/7 Helpline

Phone: +49 69 696 72 444

Reception Desk Zurich

At the Kloten location, there is no physical reception available. However, the reception at the Opfikon location can be reached by phone.

Opening hours: Mon-Fri 7:00 a.m. to 5:00 p.m.

Phone: +41 44 564 5900

E-mail: empfang_zrh@lat.dlh.de

For any questions or issues on-site, you can always contact the colleagues from Simulator Maintenance in the shift office or 24/7 by phone.

Phone: +41 79 593 0304, +41 76 401 9425

Internet/WI-FI

Public WI-FI is available throughout the building. Connect to „WLAN LAT CH Public“ and register using your mobile phone number including country code. You will receive an SMS with your username and password - please do not delete this message! LHG und SWISS employees can connect to their regular corporate WI-FI networks.

Taxi-Service

To order your taxi contact the reception desk or use the QR Code.



Username: LAT

Password: LAT20

SERVICES / FOOD AND BEVERAGES

Coffee Corner & Nearby Food Options

On the first floor of Building G, a coffee lounge is available for your convenience. Vending machines offer coffee, tea, and snacks, and a complimentary water dispenser is also provided. Comfortable lounge chairs invite you to sit back and relax. Please note that no microwave is available.

Alternatively, you can find a variety of food options at Zurich Airport, just a short distance away, or at the Aldi supermarket, which is only a few minutes walk from the Training Center in the direction of Balsberg.



More Information
Training Facilities Overview p.7

SERVICES / PARKING

Parking

Please note that there is no visitor parking available. Only four parking spaces are reserved for customers working on site as instructors.

Please park at the airport and walk, take the tram, or use the bus to reach the Training Center.

SERVICES / CUSTOMER SATISFACTION MANAGEMENT

We value your feedback

As a company with a strong customer focus, we do everything we can to provide the finest service possible. Your suggestions or criticism helps us improve. We look forward to receiving your comments. Please e-mail us at info@lat.dlh.de, or visit our website lufthansa-aviation-training.com and use the contact form in the contact area.

Lufthansa Aviation Training Switzerland AG
Cherstrasse 1
8152 Opfikon
Switzerland

Contact

Phone: +41 44 564 5900

E-mail: empfang_zrh@lat.dlh.de
lufthansa-aviation-training.com

© Lufthansa Aviation Training, 02.2026