



What's where at Lufthansa Aviation Training Switzerland

If you have any questions or queries while you are with us, the reception desk in building C is your first port of call. You can pick up your personal ID badge there, too. The reception desk is staffed from 07:45 to 12:00 and 13:00 to 17:00 Mondays to Fridays. Our LAT facilities can be accessed at any time of the day or night. When the desk is closed, please use the external telephone at the main entrance in building F to contact Maintenance, who will provide the access required.

If you have a WLAN-enabled laptop, you can access the internet via any of our many LAT hotspots. This facility is available in all our classrooms, briefing rooms, CBT rooms, coffee rooms, meeting rooms and lounge, as well as in the auditorium and the Glashouse, and it is free of charge.

Alternatively, you can use our internet café on the 4th floor of building E (Room E462).

If you fancy a coffee, a snack, a sandwich or a hot lunch, head over to building B, where you will find a cosy cafeteria that is open from 07:30 to 14:00 Mondays to Fridays. Drinks and snack machines are also provided in every building.

Cook, eat, meet and relax

Room D114, which is on the first floor of building D, has been specially provided for all of the above. The room is equipped with microwave ovens to prepare meals, along with comfortable furnishings to rest and relax in. If you wish to make a meal, you can either bring your own food or buy it at the cafeteria in building C.

The nearby Balsberg personnel restaurant (open from 11:30 to 13:30 Mondays to Fridays) also offers a varied choice of international dishes. And don't forget the many restaurants and cafés at Zurich Airport.

Useful links

www.compass-group.ch/balsberg
www.zurich-airport.com



Our training facilities

Full Flight Simulators (FFS)

- Agusta Westland AW109 SP
- Airbus A320
- Airbus A321
- Airbus A330/340
- Avro RJ
- Boeing 777
- Bombardier C Series
- Embraer EMB190
- Embraer EMB190
- Embraer ERJ 145

Room no./location

- G120
- F109
- E086
- G126
- F111
- F109
- F111
- Frankfurt
- Vienna
- E082

- REGA AW109 SP #2 G115
- Avro RJ F337
- Boeing 777 F341
- Bombardier C Series G322
- Bombardier C Series IPT F331
- Embraer ERJ 145 E182

Flight Navigation Procedure Trainers (FNPT) & Integrated Procedure Trainers (IPT)

- Airbus A321/A330/A340 IPT
- Embraer 170/190 /195 IPT
- Beechcraft King Air 200 FNPT II
- Boeing 777 IPT
- Bombardier C Series IPT
- Diamond DA-42 FNPT II #1 Maastricht
- Diamond DA-42 FNPT II #2 Sofia
- Diamond DA-42 FNPT II #3 Zurich

Room no.

- E184
- Vienna
- E062
- E185
- F210
- E062
- E062
- E062

E-learning

- CBT stations 1-24 E156
- CBT stations 25-48 E168
- CBT stations 49-72 E164
- CBT stations 73-96 E454

Cabin Emergency Evacuation Trainers (CEET)

- Airbus A32X CEET BU06
- Airbus A330/340 CEET D013
- Boeing 777 CEET BU21
- C Series CEET (as of 2017) BU08
- Embraer 170 CEET D013

Cabin crew training

- Airbus A319/A320 door trainer BU21
- Airbus A330/340 door trainer BU17
- Airbus A320 overwing exit trainer BU21
- Avro RJ door trainer BU17
- Beauty room E358
- Boeing 737/767 door trainer CU25
- Coiffeur room E353
- Embraer 190 overwing exit trainer BU21
- Equipment parcours (dangerous goods) BU03
- Gulfstream G5 door trainer CU25
- Medical mock-up E057
- Service mock-up E056
- Service parcours E074

Aircraft

- Diamond DA42 HB-LUJ
- Diamond DA42 HB-LUO
- Diamond DA42 HB-LUP
- Diamond DA-40NG HB-SGN
- Diamond DA-40NG HB-SGO
- Diamond DA-40NG HB-SGP
- Diamond DA-40NG HB-SGR
- Diamond DA-40NG HB-SGS

Location

- Grenchen
- Grenchen
- Grenchen
- Grenchen
- Grenchen
- Grenchen
- Grenchen
- Grenchen

Briefing rooms

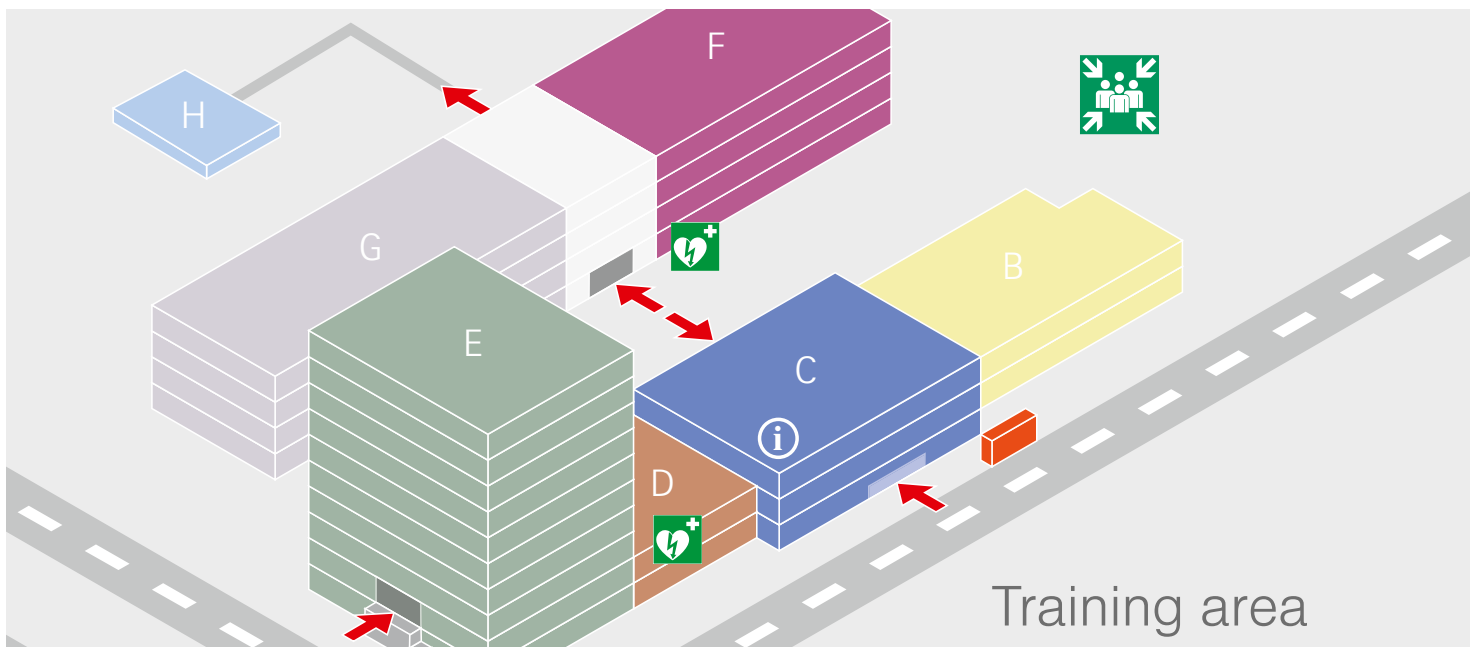
- Airbus A320
- Airbus A321
- Airbus A330/A340
- Augusta Westland AW109 SP #1

Room no.

- G323
- E183
- G327
- G011

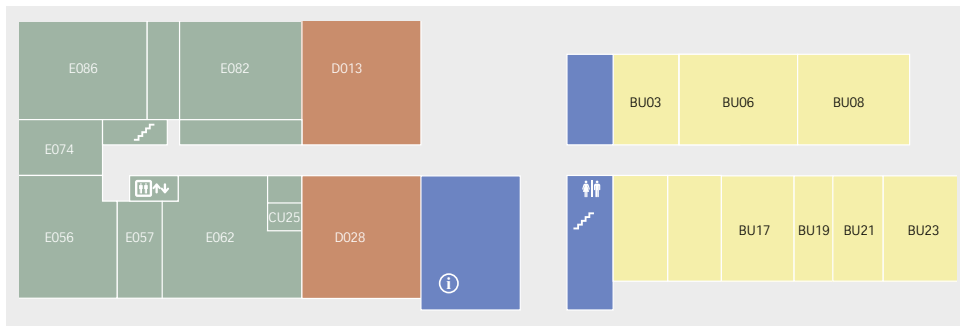
Fire fighting equipment

- Fire fighting equipment H001

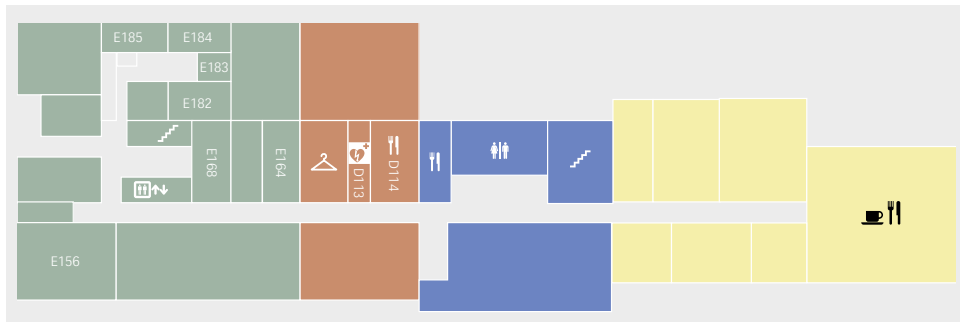


Training area

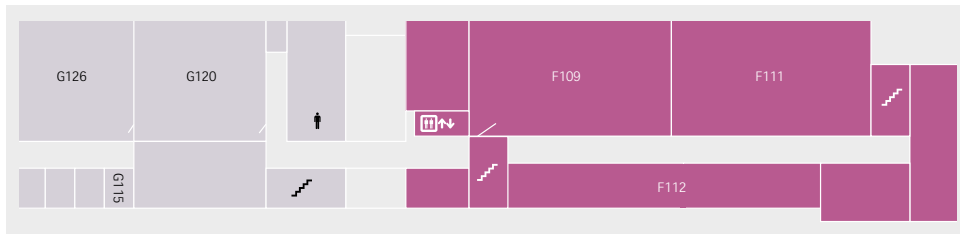
Building B-E – ground floor



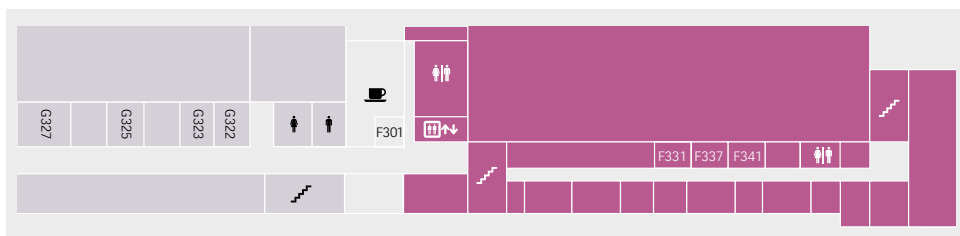
Building B-E – first floor



Building G-F – first floor



Building G-F – third floor



- BU03 Equipment parcours (dangerous goods)
- BU06 C Series door trainer
- BU08 C Series CEET (as of 2017)
- BU17 A330/A340 door trainer
- BU17 Avro RJ door trainer
- BU19 Interlab room
- BU21 A319/A320 door trainer
- BU21 A320 overwing exit trainer
- BU21 Embraer 190 overwing exit trainer
- CU25 Gulfstream G5 door trainer
- CU25 Boeing 737/767 door trainer
- D013 A330/A340 CEET
- D013 Embraer 170 CEET
- D028 Maintenance training devices cabin and infrastructure
- D113 (in front of) Defibrillator
- E056 Service mock-up
- E057 Medical mock-up
- E062 Beechcraft King Air 200 FNPT II
- E062 Diamond DA42 FNPT II #1-3
- E074 Service parcours
- E082 Embraer ERJ 145 FFS
- E086 A321 FFS
- E156 CBT stations 1-24
- E164 CBT stations 49-72
- E168 CBT stations 25-48
- E18X Locker room
- E182 Embraer ERJ 145 briefing room
- E183 A321 briefing room
- E184 A320/A330/A340 IPT
- E185 Boeing 777 IPT
- F00X Defibrillator
- F109 A320 FFS
- F109 Boeing 777 FFS
- F111 Avro RJ FFS
- F111 C Series FFS
- F112 Maintenance simulator
- F210 Bombardier C Series IPT
- F301 Locker room
- F331 Bombardier C Series IPT briefing room
- F337 Avro RJ briefing room
- F341 Boeing 777 briefing room
- G011 AW109 SP #1 briefing room
- G115 REGA AW109 SP #2 briefing room
- G120 AW109 SP FFS
- G126 A330/A340 FFS
- G322 Bombardier C Series briefing room
- G323 A320 briefing room
- G325 Paper tiger room
- G327 A330/A340 briefing room

Good to know – in brief

Contact details

Lufthansa Aviation Training (LAT)

Phone: +41 44 564 5900

Fax: +41 43 556 84 99

Website: www.lufthansa-aviation-training.com

Email: info@lufthansa-aviation-training.com

Access to training devices

Access is only possible with a security badge. Badges can be obtained during reception hours or together with a LAT instructor. If access to training devices is not possible, please contact either the reception desk or our simulator maintenance phone +41 44 564 5999.

Reception:

Staffed Mondays-Fridays from 07:45 to 12:00 and 13:00 to 17:00

Phone: +41 44 564 5900

Public transport and taxis

From Zurich Airport to LAT:

Bus 510, 735, 736, 759 or 768 to "Werft" (1st stop)

Tram 10/12 (Glattalbahn) to "Balsberg" (1st stop)

From downtown Zurich to LAT:

Train S7 towards Winterthur to "Balsberg" (about 20 minutes)

From LAT to downtown Zurich:

Train S7 towards Rapperswil to "Zurich Hauptbahnhof"

(about 20 minutes)

Further information:

For buses and trams: www.zvv.ch | ZVV contact 0848 988 988

For trains: www.sbb.ch

For taxis: www.taxi7x7.ch | +41 44 777 77 77

Arriving by private car

Lufthansa Aviation Training is located next to the motorway between Zurich and Zurich Airport.

From St. Gallen or Bern to LAT

Take the A1 motorway (towards Zurich and Zurich Airport/Bülach A51) and leave at Exit 8, "Glattbrugg/Kloten".

From Bülach to LAT

Take the A1 motorway (towards Zurich) and leave at Exit 7, "Werft".

The Taubenried Car Park (P60) is a two minutes walk from LAT.

Don't forget to take a ticket on arrival!

Taubenried car parking P60

For your navigation system, please use the following address:

Zürich-Langzeitparking, Werftstrasse, 8302 Kloten

Business center

WIFI Internet

You can obtain the log-in you will need at reception (please note that you will need to present a valid official ID) or via SMS text message with instructions which you can get at the reception.

Mail

You can hand in any mail (please attach a stamp) at the post office next to reception.

Photocopiers

Photocopiers

Room no.

E567, E741, F347, G203

Food, drink and relaxation

Drinks machines

Building C, 1st floor

Building E, 4th and 8th floor

Corridor A- B, 1st floor

Corridor F-G, 3rd floor

Sandwiches and other snacks

Corridor F-G, 3rd floor

Building C, 1st floor

Building E, 4th and 8th floor

Break room (with Microwave)

Room D113 and D114

(open Mondays-Fridays from 07:00 to 20:00)

Cafeteria

Building B, 1st Floor (open Mondays-Saturdays from 07:30 to 14:00)

Restaurant

"puur" – the Balsberg staff restaurant

Balz-Zimmermann-Strasse 7

8058 Zurich Airport

Open Mondays-Fridays from 11:30 to 13:30

Other local restaurants

There are restaurants of various types in the vicinity of LAT: Asia, greens, Intermezzo, Nordsee, Runway 34, Mövenpick and many others, too.

Like to know more? Feel free to contact us!

Lufthansa Aviation Training Switzerland Ltd.

P.O. Box

CH-8058 Zurich Airport

Phone +41 44 564 5900

Fax +41 43 556 84 99

info@lufthansa-aviation-training.com

www.lufthansa-aviation-training.com