



Lufthansa
Aviation Training

Train smart. Fly safe.



Zurich.

Your Training Guide.

Map

Lufthansa Aviation Training Center	3
------------------------------------	---

Directions

By Aircraft	4
By Car	5
By Public Transport	6

Training Facilities

Overview	7
----------	---

Services

Access to the Building and Training Devices	8
Services of Lufthansa Aviation Training	9
Food and Beverages	10
Lockers and Parking	11
Customer Satisfaction Management	12

The Lufthansa Aviation Training Center Zurich is located near Zurich Airport.

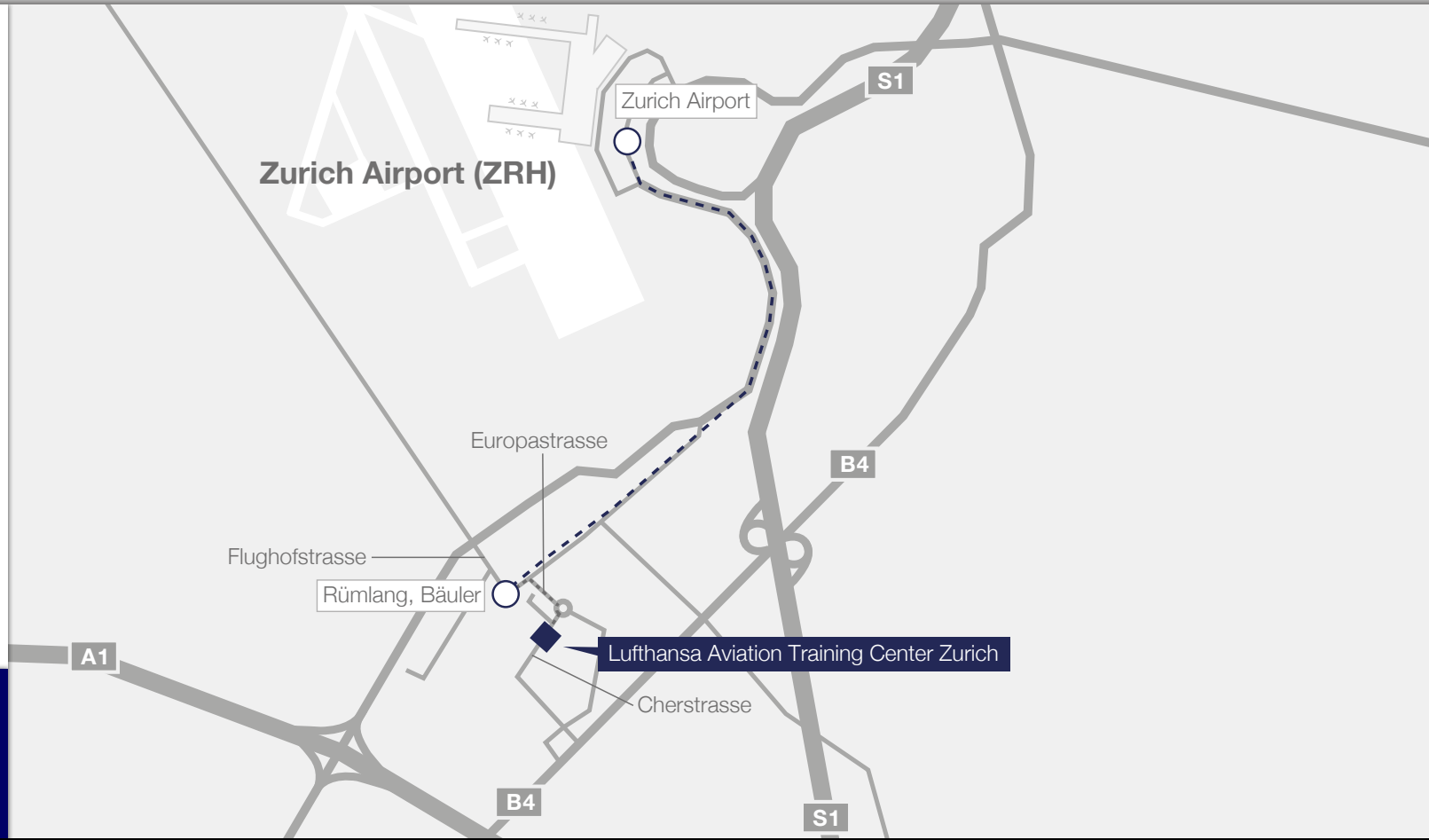


Directions / By Aircraft

You can take a taxi from the terminal to the Training Center at Cherstrasse 1, Opfikon.

Alternatively, you can take the tram (line 10 or 12) from the airport's bus/tram terminal to "Rümlang, Bäuler" (3 stops). From there, it is a five-minute walk to the Training Center.

- Tram station
- - - - By tram 10/12
- - - - By foot



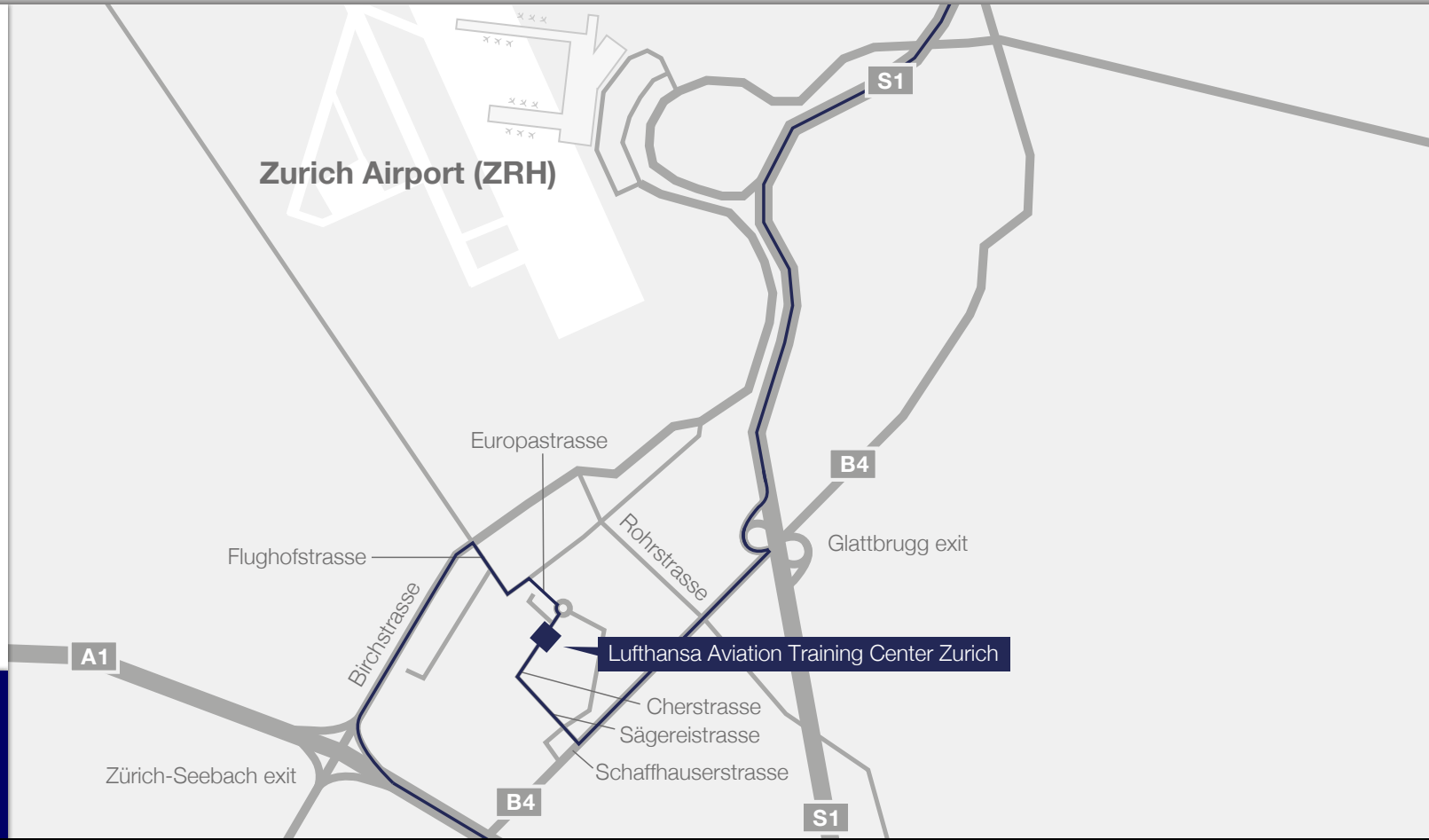
More information:

- By Car** > 5
- By Public Transport** > 6

Lufthansa Aviation Training is located close to the A1 motorway towards Berne/Basel. The closest exits are “Zürich Seebach” and “Glattbrugg”.

Please note that there is no visitor parking available for more than 60 minutes. We recommend that you park at the Airport and take tram No. 10 or 12 to our training center (5-minute tram-ride to tram stop “Bäuler”).

— By car



More information:

By Aircraft > 4

By Public Transport > 6

Directions / By Public Transport

From downtown Zurich to LATC ZRH:

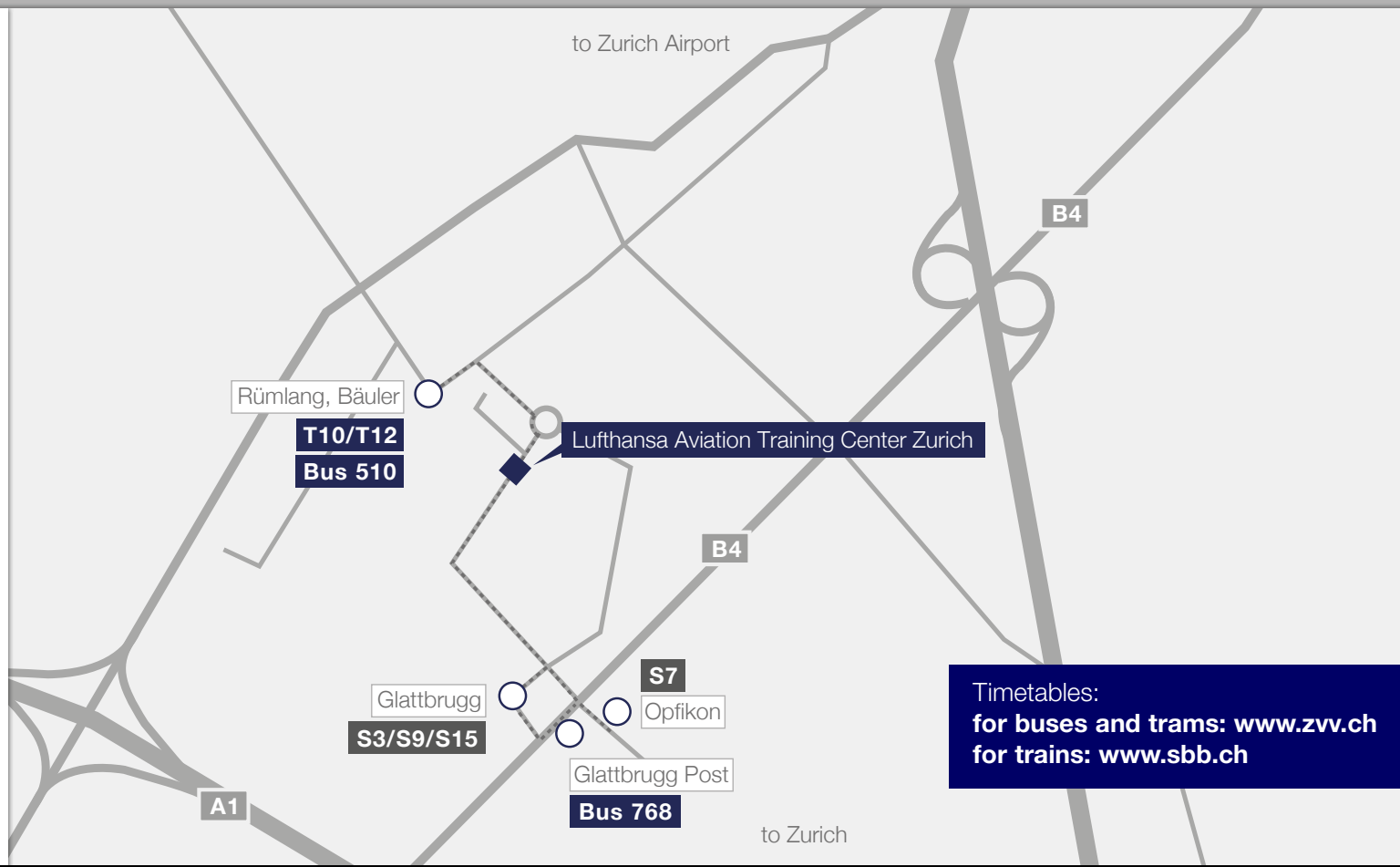
- Train S3, S9 and S15 to “Glattbrugg” (about 10 min)
- Train S7 to “Opfikon” (about 15 min)

From Zurich Airport to LATC ZRH:

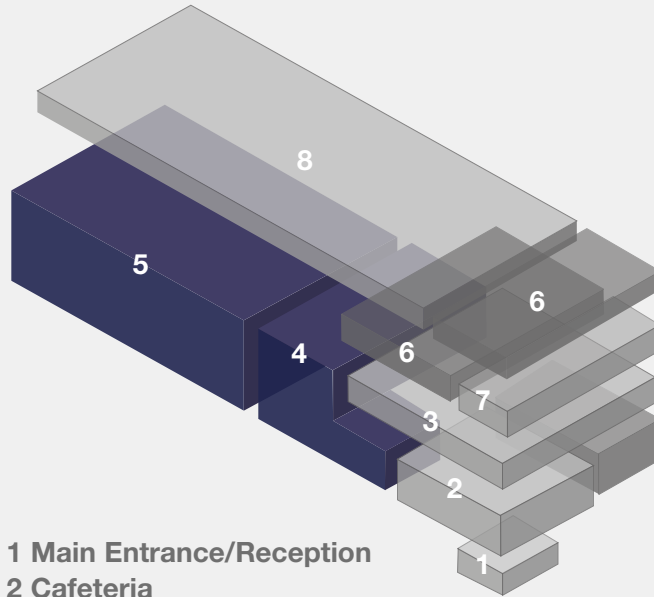
- Tram 10/12 (5 min) and Bus 510 (5 min) to “Rümlang, Bäuler”
- Bus 768 to “Glattbrugg Post” (7 min)

There are direct connections between 05:39 and 00:09, also on weekends and public holidays.

- Train/Bus station
- From Zurich
- From Zurich Airport
- By foot



Covering an area of 11,000 square meters, the Lufthansa Aviation Training Center in Zurich unites the complete infrastructure of an aviation training center under one roof, including the Flight School and Assessment Center. Six state-of-the-art full-flight simulators with technical rooms and flexible work stations offer everything that meets today's requirements for leading-edge airline training. In another hall, there are five fully equipped cabin trainers for cabin crew training. In addition, there are workshop rooms, focus, training and briefing rooms as well as a 24/7 cafeteria and catering area, which can be used for mobile work.



- 1 Main Entrance/Reception**
- 2 Cafeteria**
- 3 Cabin Training**
- 4 CEET**
- 5 Full-Flight Simulators**
- 6 Workspaces**
- 7 Assessment Center**
- 8 Class and Briefing Rooms**

Safety, Medical, Emergency

- 5 Cabin Emergency Evacuation Trainers (CEET) (E170, A220, A320, A330/340, Boeing 777-300)
- 1 Equipment Parcours
- 5 Door Trainer (E2, A220, A320/321, A330, Boeing 737)
- 1 Raft
- 1 Flight Deck Access Trainer
- 5 Slides
- 1 Fire Trainer
- 1 Medical Trainer
- Medical Mock-Up
- 1 Pilot Incapacitation Trainer

Flight Crew

Full-Flight Simulators (starting in 2020):

- 1 Airbus A320-200
- 1 Airbus A220 (former Bombardier C-Series)
- 1 Airbus A330-200/A340-300
- 1 Boeing 777-300ER
- 1 Embraer ERJ-145
- 1 Embraer E190-E2

- 3 FNPT Diamond DA-42 TDI
- 1 A320 FTD
- 1 Embraer E190-E2 FTD
- 3 Integrated Procedure Trainers

Cabin Crew

- 2 Service Trainers
- 1 Service Parcours
- 1 Hair & Beauty Room

ACCESS AND CHECK-IN

Access to the building is granted with an entitled company badge or QR-Code which is issued after completing your online registration with your name and the required training dates. The link to our eRegistration tool can be found here: www.lufthansa-aviation-training.com/e-services/

Additionally, to access the simulators, an entitled badge or a check-in for the session are needed.

For check-in please contact our reception upon arrival or use the check-in terminal in the reception area outside opening hours. Please visibly carry your company badge on you at all times inside the building.

GROUP SERVICES OF LUFTHANSA AVIATION TRAINING

24/7 Helpline

Phone: +49 69 696 72 444

E-mail: info@lat.dlh.de

RECEPTION DESK ZURICH

Our reception desk is available for you to issue visitor badges, book a taxi or provide useful tips and information during your stay at LATC ZRH.

Opening hours: Mon–Fri 7:45 a.m. to 5:00 p.m.

Phone: +41 44 564 5900

E-mail: empfang_zrh@lat.dlh.de

INTERNET/WLAN

Corporate and public WLAN is available throughout the building.

CAFETERIA/SELF-CATERING/VENDING MACHINES

If you fancy a coffee, a snack, a sandwich or a hot lunch, head over to the Cafeteria on the ground floor that is open from 7:00 a.m. to 3:00 p.m. from Monday to Friday. Hot meals are available from 11:00 a.m. to 2:00 p.m.

There is a 24/7 catering area where you can buy meals to heat up in the provided microwaves or heat up your own food. Self-catering guests are welcome to eat in the restaurant and use the cutlery there.

Drinks and vending machines are also provided on every floor in the lounge areas.

BAGGAGE

There is a storage room for suitcases next to the reception desk. Lockers for smaller bags are provided opposite the reception desk as well as on the first and third floor.

PARKING

Please note that there is no visitor parking available for more than 60 minutes. We recommend that you park at the Airport and take tram No. 10 or 12 to our training center (5-minute tram-ride to tram stop “Bäuler”).

WE VALUE YOUR FEEDBACK

As a company with a strong customer focus, we do everything we can to provide the finest service possible. Your suggestions or criticism helps us improve. We look forward to receiving your comments. Please e-mail us at info@lat.dlh.de, or visit our website www.lufthansa-aviation-training.com and use the contact form in the contact area.



Lufthansa **Aviation Training**

Train smart. Fly safe.

Lufthansa Aviation Training Switzerland AG
Cherstrasse 1
8152 Opfikon
Switzerland
Phone: +41 44 564 5900
E-mail: info@lat.dlh.de
www.lufthansa-aviation-training.com